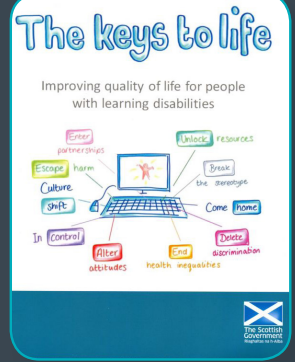


# the keys to life work and volunteering



come and tell us what you think

The logo for 'The keys to life' is at the top, with the tagline 'Improving quality of life for people with learning disabilities'. Below it is a central graphic of a laptop with various icons around it, each with a label: 'Enter', 'partner ships', 'Escape', 'harm', 'Culture', 'Shift', 'In Control', 'Unlock', 'resources', 'Break the stereotype', 'Come home', 'Delete', 'discrimination', 'End health', 'filter', 'abilities', and 'health requirements'. The Scottish Government logo is in the bottom right corner.	<p>‘The keys to life’ has many recommendations about how to make life better for people with learning disabilities.</p> <p>A recommendation is an idea about how to make things better in the future.</p>
A woman in a blue shirt is pointing at a white sign that has three numbered lines: '1. ___', '2. ___', and '3. ___'.	<p>Some of the recommendations are to help people with learning disabilities get into</p> <ol style="list-style-type: none"><li>1. education</li><li>2. paid work</li><li>3. the chance to volunteer.</li></ol>
A woman in a red shirt is pointing at a white sign that has a large red 'X' on it.	<p>We want to understand what the barriers to working or volunteering are in the Borders.</p> <p>Barriers are things that get in the way that stop us from doing what we want or need to do.</p>
A stack of papers with a paperclip on the top left. The word 'Plan' is written in bold black letters on the top sheet. The bottom sheet shows a photograph of three people sitting around a table, looking at documents.	<p>Please come to a meeting and tell us what you think. We need you to help us write a plan to make it easier for people with learning disabilities to volunteer or get work.</p>

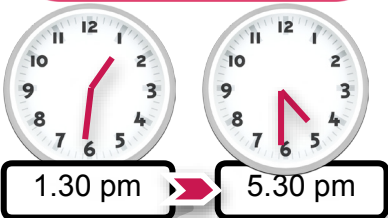


- we will have 5 meetings.
- you can come to any meeting.
- if you cannot come to a meeting but want to tell us what you think, please ask Susan for a questionnaire.

Telephone **01896 824582** or  
email **lds.admintasks@borders.scot.nhs.uk**



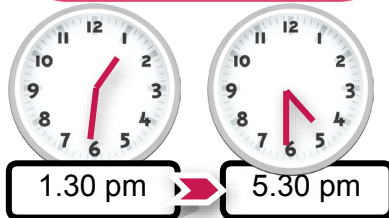
**Monday  
February  
23**



**Main Hall  
Volunteer Hall  
Duns**



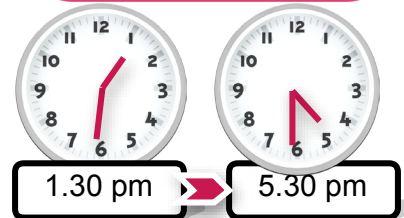
**Tuesday  
February  
24**



**Buffet Room  
Tait Hall  
Kelso**



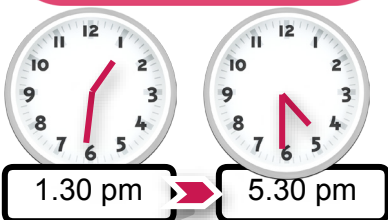
**Wednesday  
February  
25**



**Katharine Elliot Centre,  
Howdenbank  
Hawick**



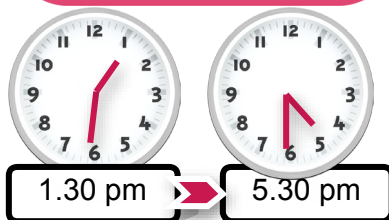
**Thursday  
February  
26**



**Blue Room,  
Langlee Community  
Centre, Galashiels**



**Friday  
February  
27**



**Room 1, Drill Hall,  
Peebles Community  
Centre**

For more information  
phone 01896 824582 or  
email [lds.admintasks@borders.scot.nhs.uk](mailto:lds.admintasks@borders.scot.nhs.uk)

